



Each day is born
with a sunrise



A Project by



SRIGDHA INFRA DEVELOPERS



AESTHETICALLY PLANNED GATED COMMUNITY LUXURY VILLAS
@ VENKATAPUR, NEAR ANURAG UNIVERSITY, POCHARAM IT CORRIDOR, UPPAL, WARANGAL HIGHWAY.



Entrance Panorama

14 Acres **15** guntas
Villas

25+
Lavish
Amenities

**DUPLEX &
TRIPLEX VILLAS**

147
Independent
units



West facing villas street view



23,000+ Sft
Clubhouse

Aerial View





Central Park



Swimming Pool

AREA STATEMENT

Plot No.	Area (sq. Yds)	Facing	Villa Type	Area (sqft)
1-9	326.26	EAST	TRIPLEX	5,009.32
10-16	208.00	WEST	DUPLEX	2,440.69
17-18	226.79	WEST	DUPLEX	2,789.31
19-20	203.21	EAST	DUPLEX	2,702.46
21-27	232.00	EAST	DUPLEX	2,745.95
28-33	208.00	WEST	DUPLEX	2,440.69
34	289.36	WEST	DUPLEX	3,207.88
35	219.04	EAST	DUPLEX	2,625.87
36-41	232.00	EAST	DUPLEX	2,745.95
42-46	208.00	WEST	DUPLEX	2,440.69
47	184.06	WEST	DUPLEX	2,301.46
48-52	232.00	EAST	DUPLEX	2,745.95
53-56	232.00	WEST	DUPLEX	2,732.72
57	220.31	EAST	DUPLEX	2,625.87
58-59	232.00	EAST	DUPLEX	2,745.95
60-61	209.95	WEST	DUPLEX	2,570.03
62	325.92	EAST	DUPLEX	3,592.01
63-68	290.11	EAST	TRIPLEX	4,171.22
69	341.23	EAST	TRIPLEX	5,302.64
70-77	208.00	WEST	DUPLEX	2,440.69
78	464.00	EAST	DUPLEX	4,386.74
79-84	232.00	EAST	DUPLEX	2,745.95
85-91	237.71	WEST	TRIPLEX	3,500.34
92-95	464.00	EAST	TRIPLEX	6,118.67
96-97	23345	WEST	TRIPLEX	3,54348
98	46750	EAST	TRIPLEX	5,704.52
99-106	232.00	WEST	DUPLEX	2,732.72
107-114	232.00	EAST	DUPLEX	2,745.95
115-122	232.00	WEST	DUPLEX	2,732.72
123-133	232.00	EAST	DUPLEX	2,745.95
134-138	232.00	WEST	DUPLEX	2,732.72
139-142	23700	EAST	TRIPLEX	3,532.62
143	196.84	WEST	TRIPLEX	3,152.46
144-146	236.93	WEST	TRIPLEX	3,584.80
147	144767	EAST	TRIPLEX	14,934.68





GROUND FLOOR

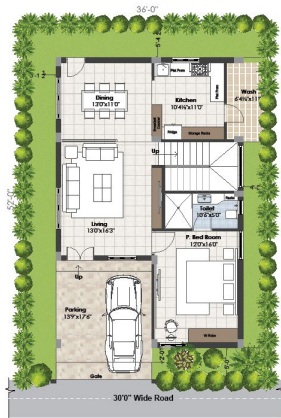
FIRST FLOOR



Area Statement

Plot Size	36"x58"
Ground Floor	1292.06 Sft.
First Floor	1292.06 Sft.
Head Room	161.83 Sft.
Total Built-up Area	2745.95 Sft.

EAST FACING **232** SQ.YDS.



GROUND FLOOR

FIRST FLOOR



Area Statement

Plot Size	36"x52"
Ground Floor	1142.50 Sft.
First Floor	1142.50 Sft.
Head Room	155.70 Sft.
Total Built-up Area	2440.70 Sft.

WEST FACING **208** SQ.YDS.



Clubhouse view



FEATURES



24 X 7 Security



Vaastu Compliant



Excellent Ventilation



High-Quality Construction



Underground Cabling System



HNS Water Supply System



Adequate Car Parking



Artistic Mastercrafted Landscaping



Earthquake - Resistant design



WTP & STP



EV Charging Stations in parking



Underground Sewerage System

AMENITIES

FACILITIES

- Wifi Enabled Club House
- State of the art Gym
- Swimming Pool with Deck Areas
- Open Dining Areas
- Banquet Hall
- Provision for Supermarket
- Cafeteria
- SPA, Steam, Massage, Salon (Style rooms)
- Ladies room
- Meditation & Yoga
- Deluxe guest rooms
- Library
- Amphitheatre
- Cycling track
- Car wash Area

ENTERTAINMENT & COMMUNICATION

- Video Calling Door bell
- CC Surveillance
- DTH Provision
- Internet Provision
- Wifi Enabled Open Spaces & Parks
- Intercom Connectivity

HEALTH CARE

- Doctors on Call
- Provision for Pharmacy

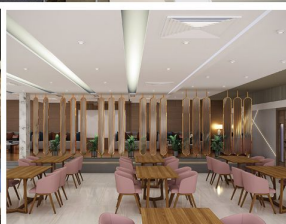
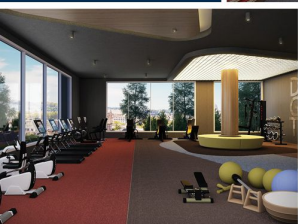
OUTDOOR GAMES

- Half Basketball hoop
- Toddlers Play Area
- Swings for Kids

GAMES / SPORTS

- Squash Court
- Badminton Court
- Table games
- Cricket Nets
- Half Basket Court
- Tennis Court





SPECIFICATION

- STRUCTURE R/C C** Framed structure to withstand wind & seismic loads
- SUPERSTRUCTURE** External walls 9" thick and internal walls 4.5" thick clay bricks.
- PLASTERING** Internal: Single coat plastering
External: Two coats of plastering using waterproofing compound.
- DOORS** Main doors: Designer entrance with Teak wood frame & veneer shutter with melamine finish and reputed hardware.
Internal doors: Teak wood frame, Veneer door shutter with reputed Hardware.
- PAINTINGS** External: Textured / smooth finish and two coats of exterior emulsion paint of reputed make. Internal: Smooth putty finish with 2 coated of premium acrylic emulsion paint of reputed make over a coat of primer.
- FLOORING** Living & Dining: 800 x 1600 mm Qutone GVT vitrified tiles. Bedrooms & Kitchen: 800 x 1600 mm Qutone Gvt vitrified tiles.
Bathrooms: Anti skid ceramic tiles - of Qutone.
Staircases: Granite.
All Balconies/Utility Rustic vitrified tiles of QUTONE Company.
- TILE CLADDING /DADOING** Dadoing Kitchen Glazed ceramic tiles dado up to 2'- 0" height above kitchen plat form of Qutone make.
Bathrooms: Glazed ceramic tile dado of Qutone make up to lintal height.
Utilities: Tiles dado up to 3' Height.
- KITCHEN SECURITY / BMS** Granite platform with stainless steel sink.
Round - the - clock security system.
Solar power fencing around the compound.
Surveillance cameras at the main security at all strategic locations.
- BATHROOMS** EWC with push valve of Kohler Brand.
Single lever Faucets with wall mixer cum shower of Kohler brand or Equivalent.
Provision for geysers in all toilets.
All C.P Fittings are chrome plated of Kohler Brands.
Sanitary: Kohler
C.P: Kohler
- ELECTRICAL** Concealed copper wiring of FINOLEX.
Power outlets for air conditioners in all Bedrooms and Living Rooms. Power plug for cooking range chimney, refrigerator, micro wave oven, mixer / grinder, dishwasher in kitchen, washing machine in utility area. Miniature circuit breakers (MCB) for each distribution boards of Legrand brands. Provision for water purifier near utility sink.
- INTERNET/ CABLE TV WTP & STP:** Provision for internet cable and cable TV.
Sewage treatment plant for adequate of adequate capacity as per norms will be provided inside the project, treated sewage water will be used for the landscaping
- GENERATOR** D.G set back up.
- AMENITIES:** Clubhouse with 23000 sqft in G-3 floors with provision for gym, spa, salon, meditation & yoga, cafeteria, Doctor on call room, ladies kiddy part area, 3 guest rooms, Indoor games, Library and Swimming pool.
Central park with amphitheatre and walking track with 7 elements of barefoot walking.
Kids play areas with outdoor games.

Some of Our Projects



Four Seasons @ Attapur.



RS Srigdha's Paramount @ Tadepalli, Vijayawada, AP



Kala Kriti @ Tarnaka.



NVR Arcade @ Tarnaka.



Shaanthi's Nirmal Brindavan @ Bhimavaram



Bhuvhana Signature @ Bhongir



Rock Cliff @ Bandlaguda.



Srigdha's Royal Crest @ Budval, Rajendra Nagar.



RS Srigdha's Grand Mansion @ Hanamkonda.



Lake View Residency @ Teschere Colony.



RS Srigdha's Residency @ Kolanukonda.



Upcoming Project
Srigdha's Whistling Woods @ Bhongir.



Upcoming Project
Bhuvhana Signature @ Bhongir.

Rising East is located in one of Hyderabad's Most exciting neighbourhoods, strategically located in Pocharam- East IT corridor, of the Warangal - Hyderabad Highway for it allows quick access to Corporate Corridors, MNCs with Full of Employment* alike. We believe our Eco-conscious endeavor will benefit immensely from your patronage.

WELCOME TO SRIGDHA'S RISING EAST...

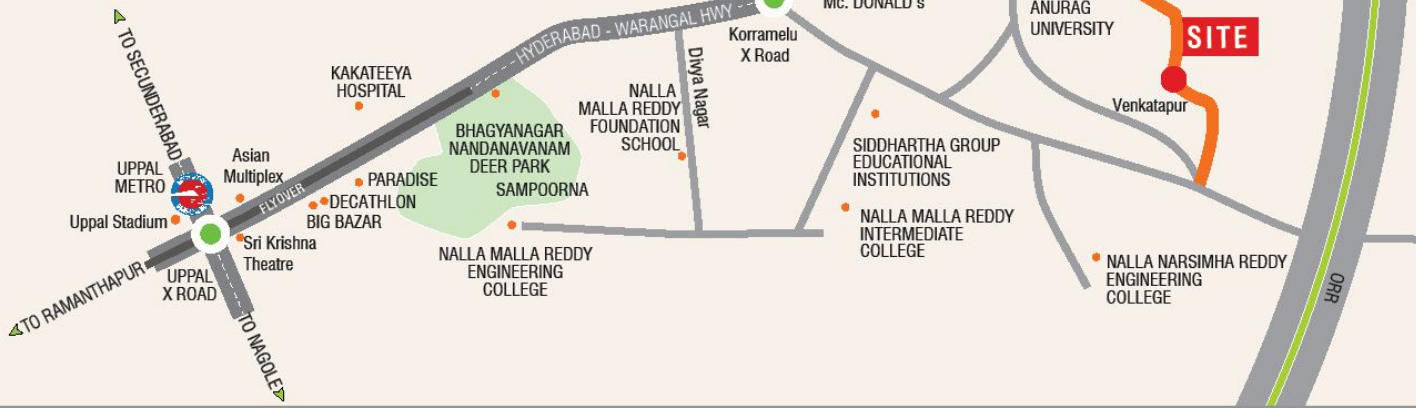
Location Map

Not to scale

Scan QR Code



To get directions to this site via Google Map



Location Highlights

- ❖ ORR - 2 Km
- ❖ Bhagyanagar nandanavanam deer park
- ❖ Narapally reserve forest
- ❖ Elevated corridor flyover from uppal ring road to CPRI (TS Second longest corridor of 6.2 Km)
- ❖ Flyover will be 3+3 Lane road, under flyover service road will be 3+3 Lane road.

SPORTS MALL

- ❖ Decathlon 24 mins

RECREATION & HOTELS

- ❖ MJR Square 7 mins
- ❖ Asian chinesquare multiplex 23 mins
- ❖ Tulips Grand 2 mins
- ❖ D-Mart Annojiguda 4 mins

UNIVERSITY

- ❖ Anurag university less than 1 min

MEDICAL COLLEGE

- ❖ AIIMS 23 mins
- ❖ Neelima Medical College (Anurag Group) 3 mins

COLLEGES

- ❖ Sreenidhi University 17 mins
- ❖ VBIT 22 mins
- ❖ Nalla Narasimha Reddy Group of Institutions 10 mins
- ❖ Nalla Malla Reddy Engineering College 15 mins
- ❖ Little Flower Junior College 23 mins

HOSPITALS

- ❖ Neelima Hospital (Anurag Group) 3 mins
- ❖ AIIMS 20 mins
- ❖ Aditya Hospital 20 mins

SCHOOLS

- ❖ Rotterdam international school 2 mins
- ❖ Delhi public school 8 mins
- ❖ Reqlford international school 22 mins
- ❖ Nalla malla reddy foundation school 14 mins
- ❖ Rockwood International school 15 mins
- ❖ Rashtriya vidya Kendram 9 mins
- ❖ Sri Vidhya nikethan school 10 mins
- ❖ Sri Chaitanya Techno School 26 mins
- ❖ Narayana IIT Olympiad School 33 mins

IT CORRIDORS

- ❖ Infosys 14 mins
- ❖ Raheja Mindspace 11 mins
- ❖ Genpact 29 mins
- ❖ Arena towers 28 mins

A Project by



SRIGDHA INFRA DEVELOPERS

SRIGDHA INFRA DEVELOPERS

S.No. 169 to 172 ,Venkatapuram,Korremula,Ghatkesar Mandal,
MedchalMalkajgiri District,Telangana.

e-mail : sales@srigdhaa.com.

CONTACT US: 7419 41 9999.

www.srigdhaa.com

Scan QR Code



To View Website

Project Approved by

